

# PUT A DODGE TO WORK

POWER, ENDURANCE AND RAM TOUGH FOR '82





## STANDARD PRODUCT FEATURES

- 3.7 litre Slant Six engine — B150, 250
- Fuel Efficient 4 Speed Manual Transmission with "Overdrive" — B150, 250
- Independent Front Suspension
- Power Steering on B250, 350
- Power Brakes on B250, 350 Van and all Wagons.
- 83 litre (18 Imp. Gal.) Fuel Tank
- Extensive use of Galvanized Steel
- Electronic Ignition System
- Dual Bright Outside Rearview Mirrors
- In-Cab Hood Release
- Wagon seating up to 15

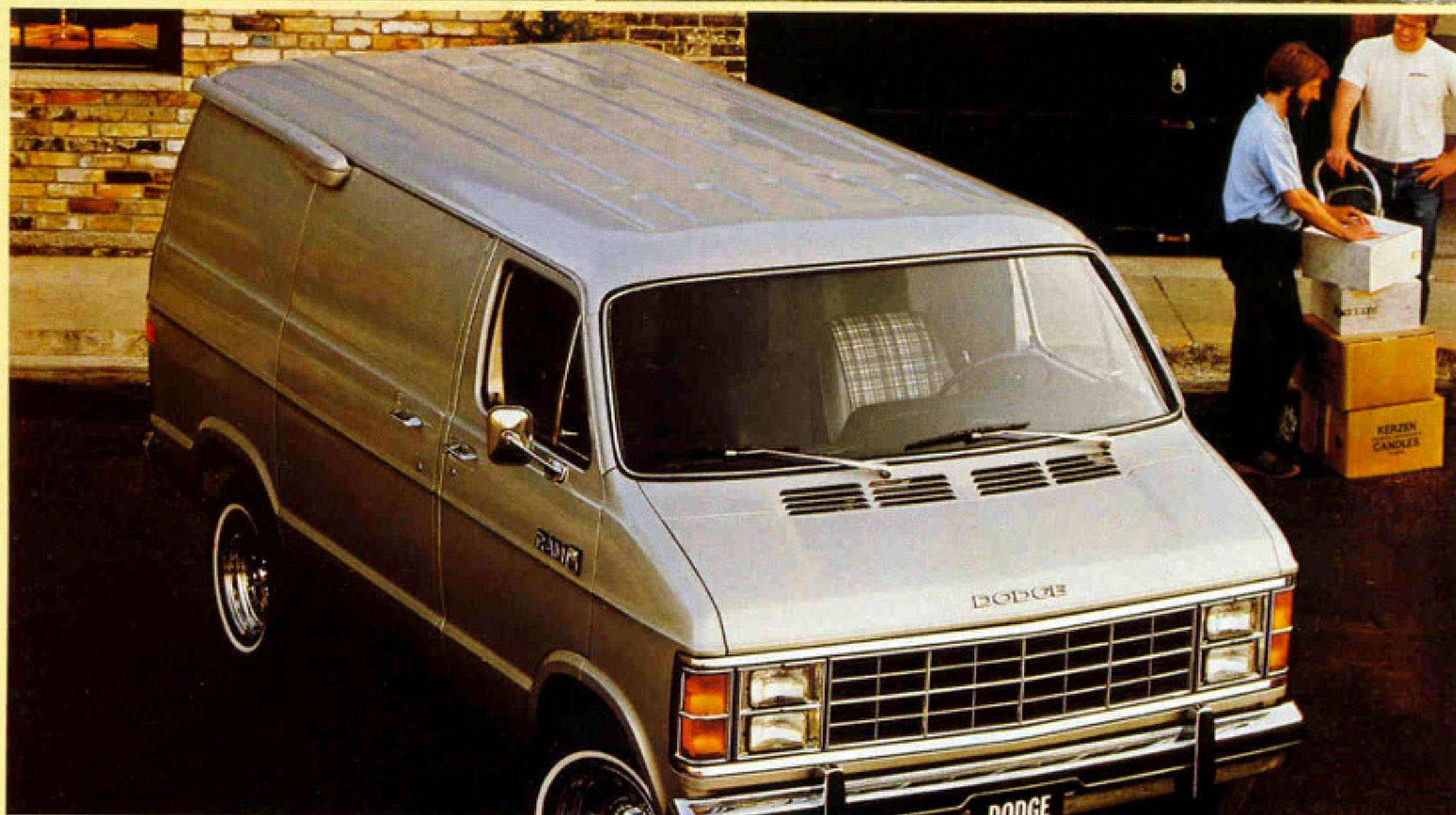
Wide-opening Double Side Doors

VAN/WAGON SPECIFICATIONS	B150 VAN	B250 VAN†	B350 MAXI VAN††	B150 WAGON	B250 WAGON†	B350 MAXI†† WAGON
Wheel Base (inches)	109.6	127.6	127.6	109.6	127.6	127.6
Overall Length (inches)	178.9	196.9	222.9	178.9	196.9	222.9
Overall Width (inches)	79.8	79.8	79.8	79.8	79.8	79.8
GVW* (lbs.)	4,700	6,010	7,500	5,300	6,010	7,500
Payload Allowance (lbs.)**	1,300	2,445	3,390	1,580	2,125	3,085
Van Cargo Capacity (cu. ft.)	201.5	240.5	296.9	—	—	—
GAWR* (lbs.) Front	2,560	2,770	2,870	2,560	2,770	2,870
GAWR* (lbs.) Rear	2,684	3,404	4,720	2,904	3,404	4,720
Spring Ratings (lbs.) Rear	1,375	1,810	2,360	1,610	1,810	2,360
ENGINE	3.7 Litre Slant-Six	3.7 Litre Slant-Six	5.2 Litre 8 Cyl.	3.7 Litre Slant-Six	3.7 Litre Slant-Six	5.2 Litre 8 Cyl.
TRANSMISSION	4 Sp. Man. Overdrive	4 Sp. Man. Overdrive	3 Speed Automatic	4 Sp. Man. Overdrive	4 Sp. Man. Overdrive	3 Speed Automatic

\*GVW — Gross Vehicle Weight (Base) \*GAWR — Gross Axle Weight Ratings \*\*Includes occupants & options

†Base B250 is 109" wb; B250 Maxi also available. ††Standard B350 is Non-Maxi.

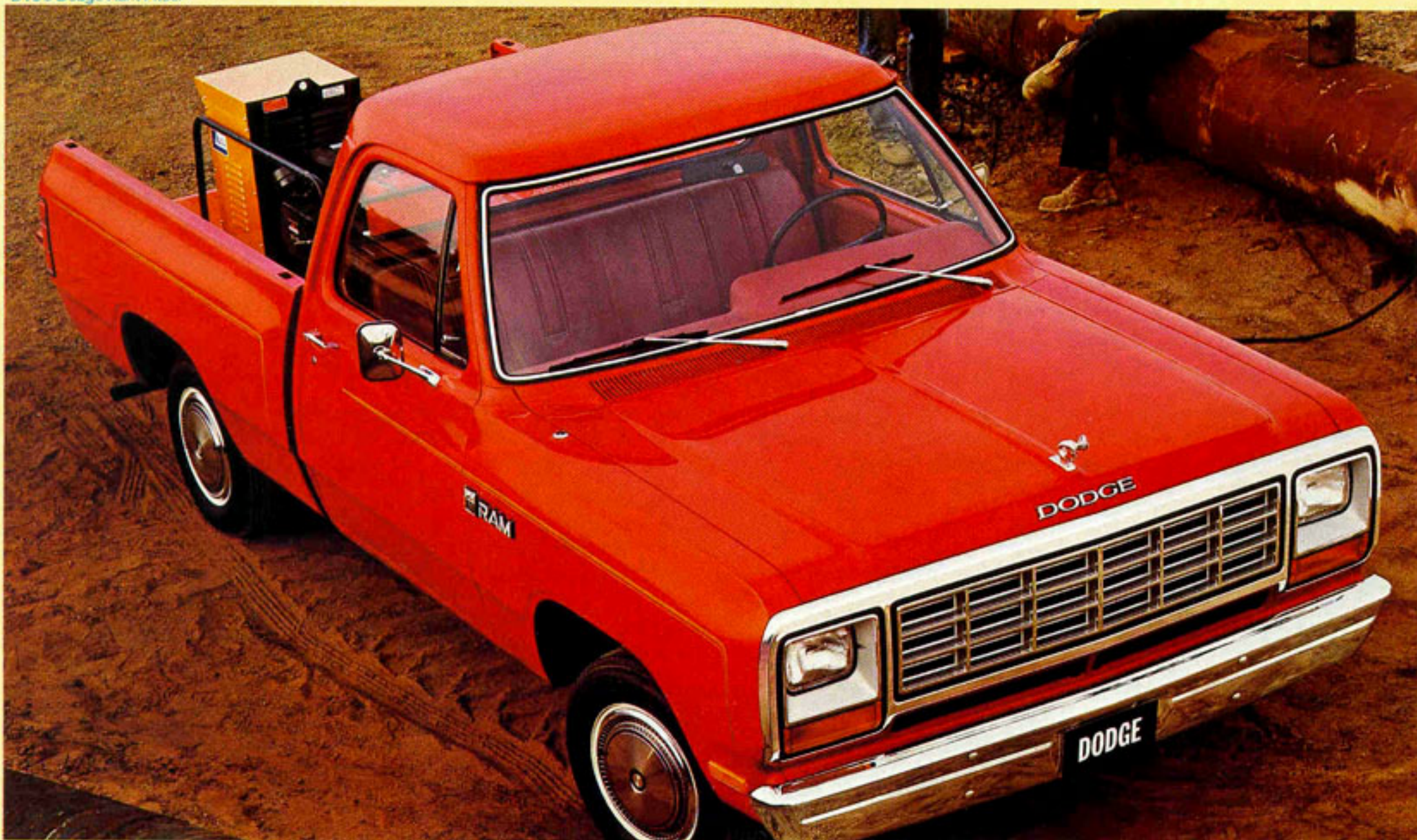
B350 Royal Maxi Wagon



Dodge Van

# RAM TOUGH VANS & WAGONS





Dodge Sweptline Pickup with Camper Top



Power Ram Four-Wheel-Drive

# POWER PACKED TRUCKS

## D150 DODGE RAM MISER

**35\* MPG.**  
8.2L/(100 km)  
Highway

**30\* MPG**  
9.5L/(100 km)  
City/Hwy.

\*Fuel ratings as published in Transport Canada Fall Edition Fuel Consumption Guide.

**B**uilt-in value describes Dodge Vans & Wagons for '82. Buyers have always looked to Dodge for outstanding engineering, creative use of space and overall handsome appointments. Your Ram Tough Dodge Van or Wagon for '82 boasts Unibody Construction for lightweight, sturdy, long lasting use. Thousands of welds unify frame and body ... no attachments to loosen, no rattles to develop. Built in line to stay in line.

Dodge for '82 ... rugged elegance! The room you want, the performance you want, the good looks you want, and the Ram Tough durability you've come to expect from Dodge. They all add up to a value packed vehicle that will let you work or play the way you want.

**D**odge has always enjoyed a reputation for quality engineering and manufacturing. Good ideas, careful workmanship and durable materials make the big difference. Every truck buyer looks for three things in a truck — the ability to hold and carry a load, driver and passenger comfort and safety, and long-lasting durability. Dodge Power-Packed Ram Trucks give you all three, in great measure. For 1982, Dodge offers even greater value and variety, from our Dodge D150 Miser — all the way up to the luxurious Royal SE Sweptline. And there's three cab styles to choose from — the 3 Man Cab, the Club Cab and Crew Cab. Two-wheel and four-wheel drive — take your pick.



TRUCK SPECIFICATIONS	RAM 50 CUSTOM PICK-UP	D150 PICKUP		D250 PICKUP		D350 PICKUP		FOUR-WHEEL-DRIVE		CHASSIS-CAB	
		CONV. CAB	CLUB CAB	CONV. CAB	CLUB CAB	CONV. CAB	CREW CAB	W150	D250	D250	D350
Wheel Base (inches)	109.4	131†	149	131	149	131	165	115††	131	131	135†††
Overall Length (inches)	184.6	210.78	228.81	210.78	228.81	210.78	244.78	190.78	210.78	206.67	216.67
Overall Width (inches)	65.0	79.5	79.5	79.5	79.5	79.5	79.5	79.5	79.5	79.5	86.0
GVW* (lbs.)	4,045	4,800	6,010	6,400	7,500	8,510	8,510	6,010	6,900	7,500	10,000
Maximum Payload	1,500	2,440**	1,980	3,505**	3,275	5,700**	5,135**	2,005	3,185**	3,895	6,075
GAWR* (lbs.) Front	1,810	2,684	3,200	3,000	3,300	3,300	3,830	3,280	3,280	3,200	3,300
GAWR* (lbs.) Rear	2,470	2,540	3,600	4,090	5,360	5,500	5,500	3,600	4,090	5,360	7,200
Spring Ratings (lbs.) Front	905	1,300	1,500	1,500	1,700	1,700	1,915	1,640	1,640	1,600	1,650
Spring Ratings (lbs.) Rear	1,235	1,270	1,820	2,175	2,725	2,725	2,750	1,820	2,725	2,725	3,650

#### BASE ENGINE/TRANSMISSION:

- 2.0 Litre with 4-Speed Manual on Ram 50 Custom
- 3.7 Litre (225) 1-bbl. Slant-Six with 4-Speed Overdrive Manual on D150, W150, 115" and 131" wb., and D250 6400 GVW.
- 5.2 Litre (318) 2-bbl. 8-cyl. with Wide Ratio 4-Speed Manual on D150, W150, 149" wb. (Club Cab), D250 7500 GVW, and all D350, W250, W350.

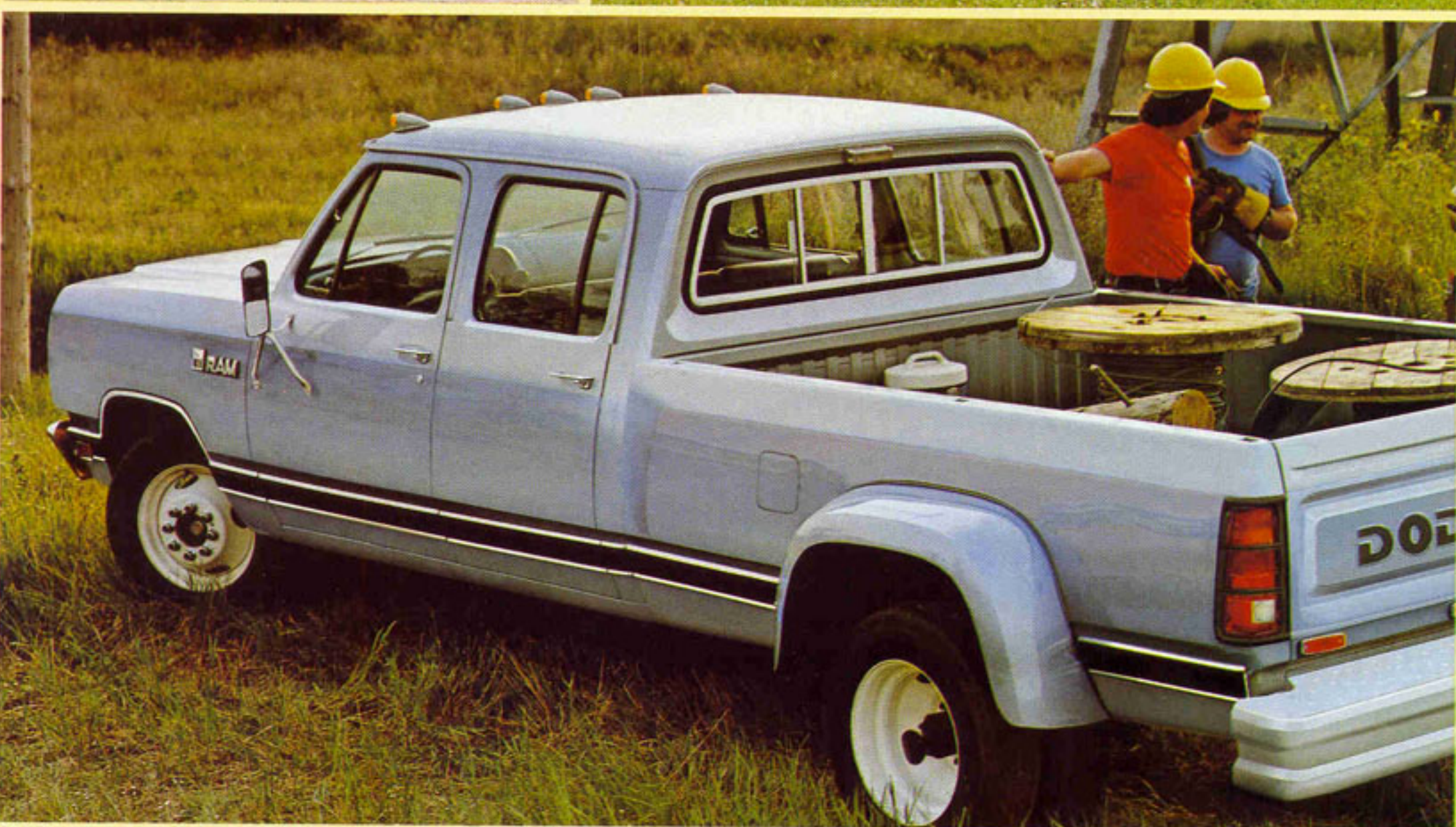
\*GVW - Gross Vehicle Weight (Base) \*GAWR - Gross Axle Weight Ratings \*\*With optional GVW. All payloads shown include occupants & options.

†Base D150 is 115" wb ††131" & 149" wb. also avail. †††131", 149" & 159" wb. also available

Ram 50 Custom



D350 with Stake Body



D350 Crew Cab Sweptline Pickup with dual rear wheels

#### STANDARD PRODUCT FEATURES

- 3.7 litre Slant Six engine
- Electronic Ignition & Spark Control
- Carbon Steel Frame with Reinforced Cross-Member
- 8-cyl. Engines over 6000 GVW Can Use Regular Leaded Gas
- 75 litre (16.5 Imp. Gal.) Fuel Tank
- Power Steering Standard on 4-Wheel Drive Models
- Extensive use of Galvanized Steel
- Dual Bright Outside Rearview Mirrors
- Easy-Off Tailgate on Sweptline Pickups
- Rear Jump Seats and Flip-out Quarter Window on Club Cab
- AM Radio (Pickup Models)
- In-Cab Hood Release



# RAM TOUGH TRUCKS... VALUE LEADERS FOR '82

## MAKE DODGE YOUR CHOICE

*Ramcharger*



*D350 Chassis-Cab with special body*



*Dodge Sweptline Club Cab*

### STANDARD SAFETY FEATURES (North American Built Trucks)

- Backup Lights
- Brake System Warning Light
- Directional Signals — Parking and Taillamps, Front and Rear
- Dual Braking System with Separate Brake Fluid Reservoirs in the Master Cylinder
- Electric Windshield Washers and Wipers
- Energy-Absorbing Steering Column
- Fade-Resistant Front Disc Brakes
- Glare-Reduction Measures for Windshield Wipers, Instrument Panel and Steering Wheel
- Inside Hood Lock Release
- Ignition and Steering Column Lock
- Inside and Outside Rearview Mirrors
- Padded Instrument Panel and Sun Visors
- Recessed Inside Door Release Handles
- Resilient Window Crank Knobs
- Safety-Rim Wheels
- Side Marker Lights and Reflectors
- Traffic Hazard Warning Flasher System
- Unibelt Restraint System with Tension Relief Feature



**E**ngineering that lets you do tough truck jobs without the hard work it used to take. Dodge Ram Tough Pickup and Chassis-Cab models have it all — underneath, where it really counts. For work or play: satisfaction and pleasure for a long, long time.

#### **Frame**

Made of high-strength carbon steel and reinforced with seven cross-members for rigidity, stability and toughness.

#### **Engine**

Remarkable performance and durability with the 3.7 litre Slant Six Engine — overhead valves with hydraulic lifters, 30 degree tilt cylinder block, tin plated aluminum alloy pistons and cast iron crankshaft.

#### **Transmission**

Job tested 4-speed manual overdrive-wide-ratio 4-speed on all Power Rams.

#### **Suspension**

Rugged leaf-spring rear suspension matched to load capacity.

#### **Shock Absorbers**

Built to handle the job and suspension-tuned to give you smooth riding and handling.

#### **Steering**

Manual steering made easier with a recirculating steel ball design mechanism that reduces friction — power steering on 4 wheel drive pickups.

#### **Brakes**

Dual Braking System — disc in front: easy to operate, reliable and fade resistant for sure and steady stops — rear drum brakes complete the system.

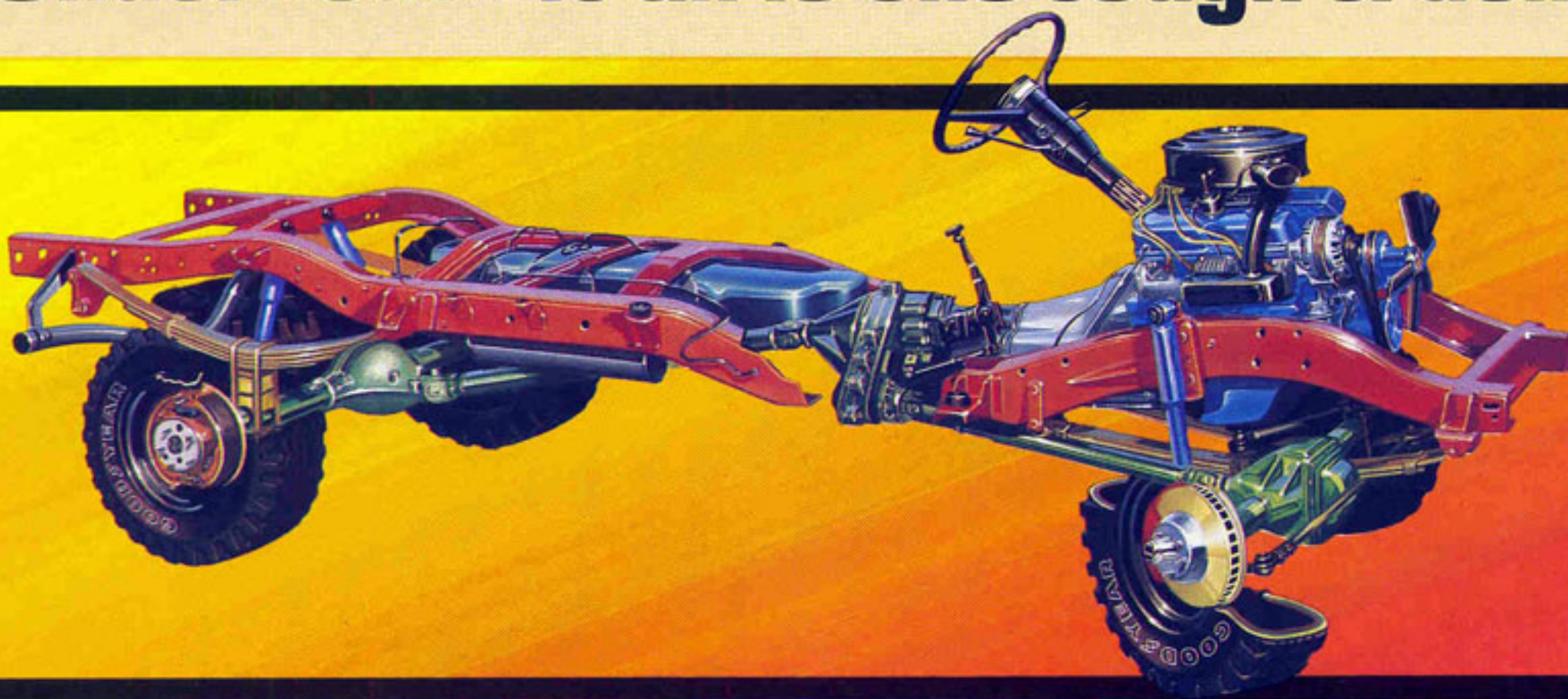
#### **Tires**

Radial tires (P-metric) are standard on lower GVW models for reduced rolling resistance and greater fuel economy.

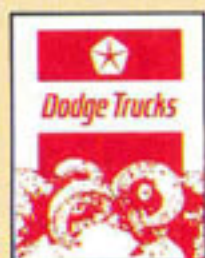
#### **Corrosion Protection**

With a generous use of galvanized steel, dipping, spraying, washing and cleaning before priming and then coating with high-gloss acrylic enamel. Longer body life and a better looking truck is now possible — even in our hard Canadian climates.

# Underneath it all is one tough truck



# Get more with Dodge built-in value



**RAM TOUGH**



**CHRYSLER**  
CANADA LTD.

All product illustrations and specifications are based on authorized information. Although all descriptions are believed correct at publication, accuracy cannot be guaranteed. Some of the equipment shown on product illustrations is optional at extra cost. Chrysler Canada Ltd. reserves the right to make changes from time to time, without notice or obligation, in specifications, color and materials, and to change or discontinue models. Certain models, packages and options are subject to specific requirements and restrictions. Ask your dealer for latest information.

**1982**  
The year you'll say  
**yes**  
to Chrysler

Printed in Canada January 1982